

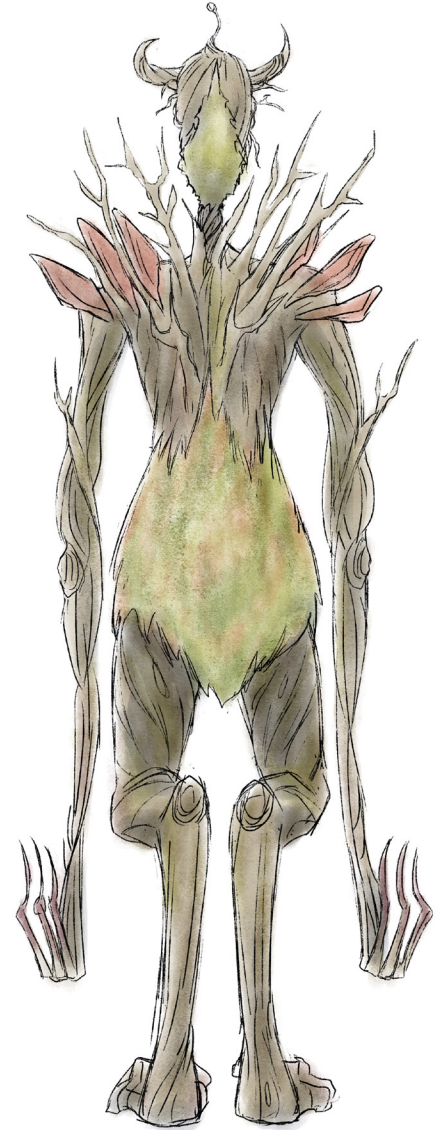
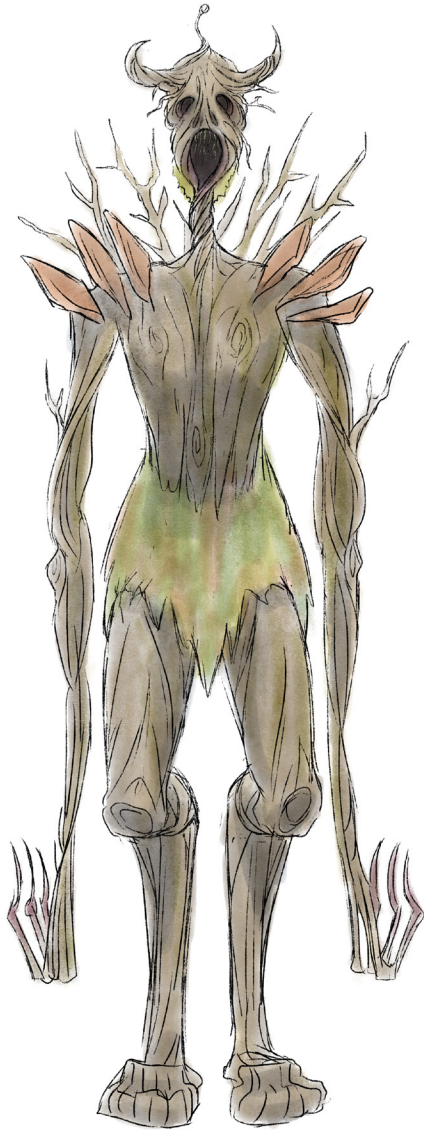
# JESSICA WU





# CHARACTER TURNAROUND

Barky



# CHARACTER TURNAROUND + EXPRESSIONS

Winnie

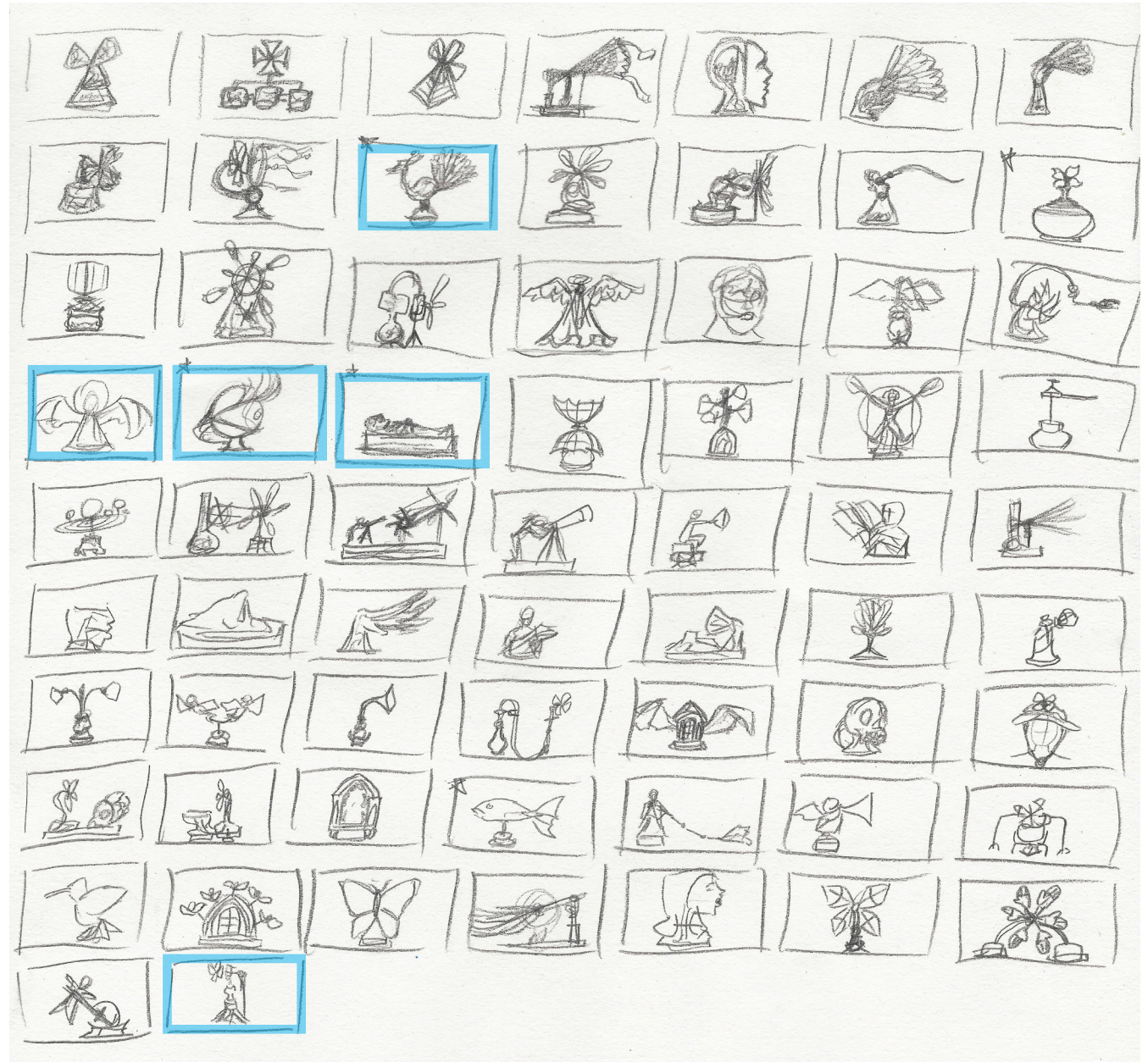




# PROP DESIGN: EXPLORATORY THUMBNAILS

The assignment was to design a prop based on a randomly selected combination of power source, style/time period, and object. In my case, I was assigned a **biomass-powered Renaissance fan.**

Highlighted thumbnails were further developed.





# PROP DESIGN: EXPLORATORY DRAWINGS

(biomass-powered Renaissance fan)

*"EYE may be of your FAN-cy."*



*BLOW your guests away  
with this unique unit!*

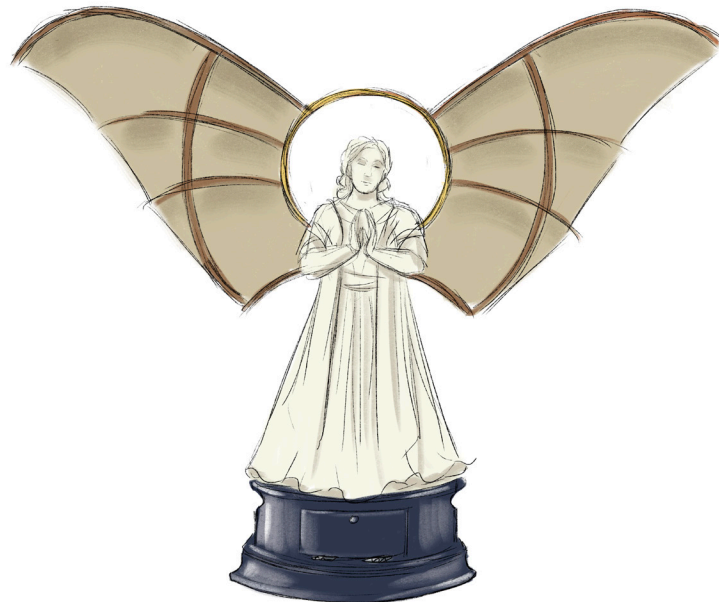


*A FAN-tastic gift!*



*SUSTAINABLE  
~CUSTOMIZABLE~  
HERETIC-FUELED  
FAN*

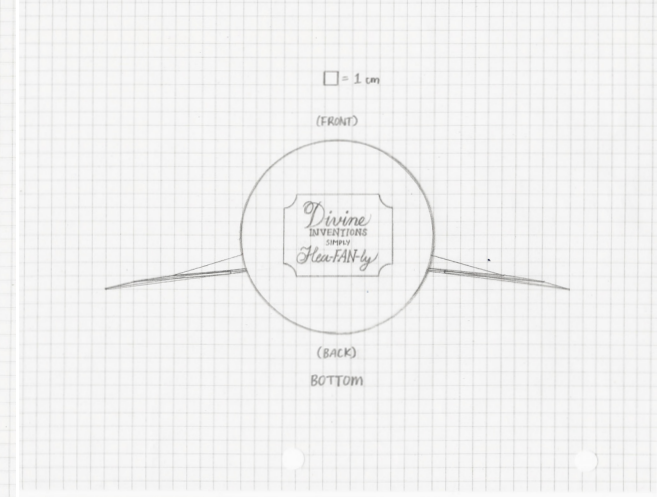
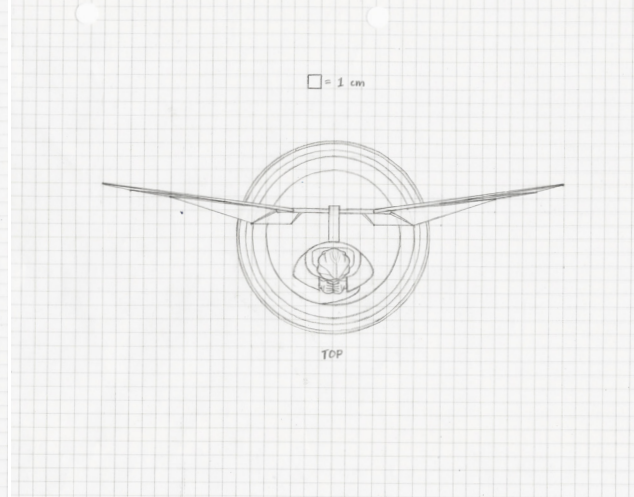
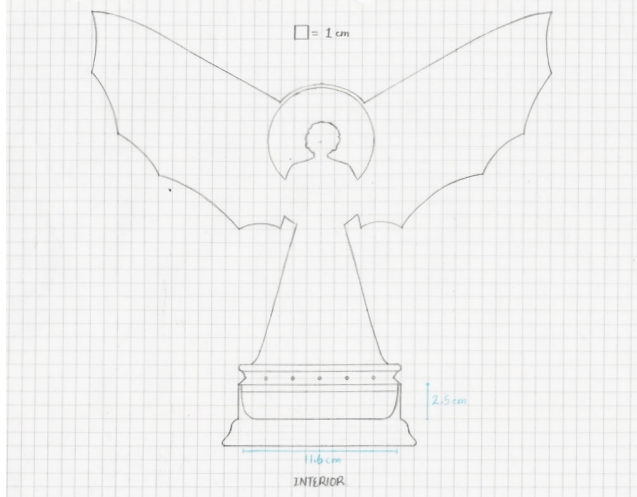
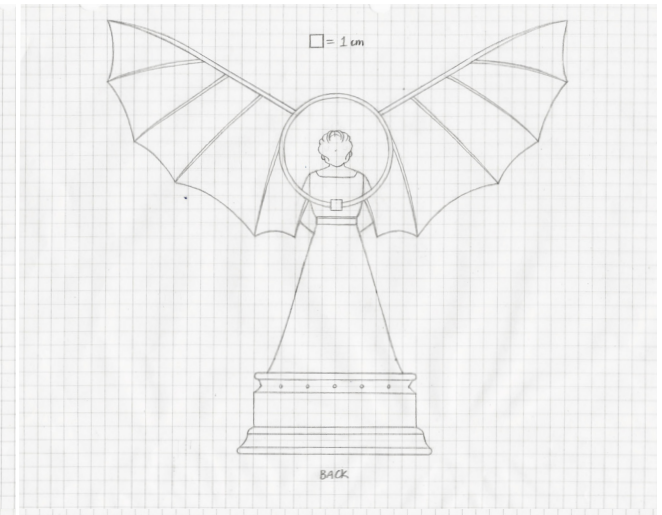
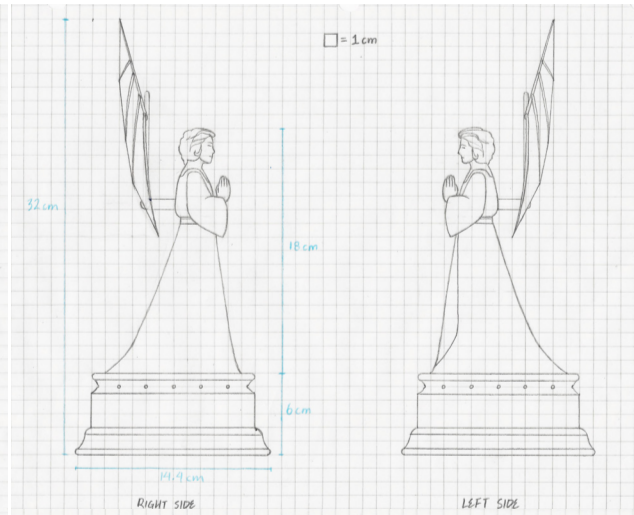
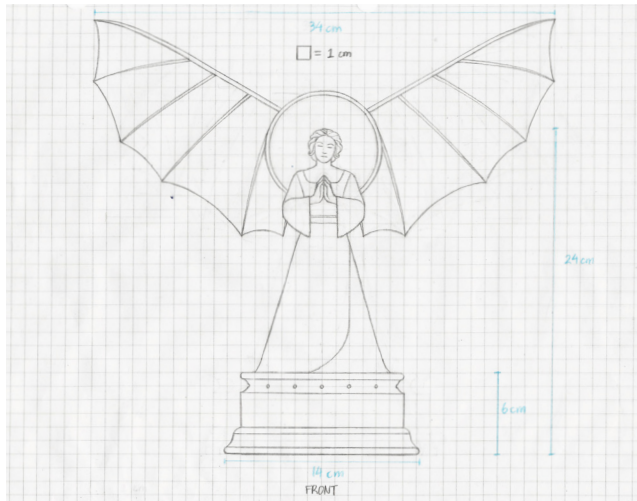
*Burn those pesky heretics  
and stay cool while doing it!*





# PROP DESIGN: FINAL DESIGN

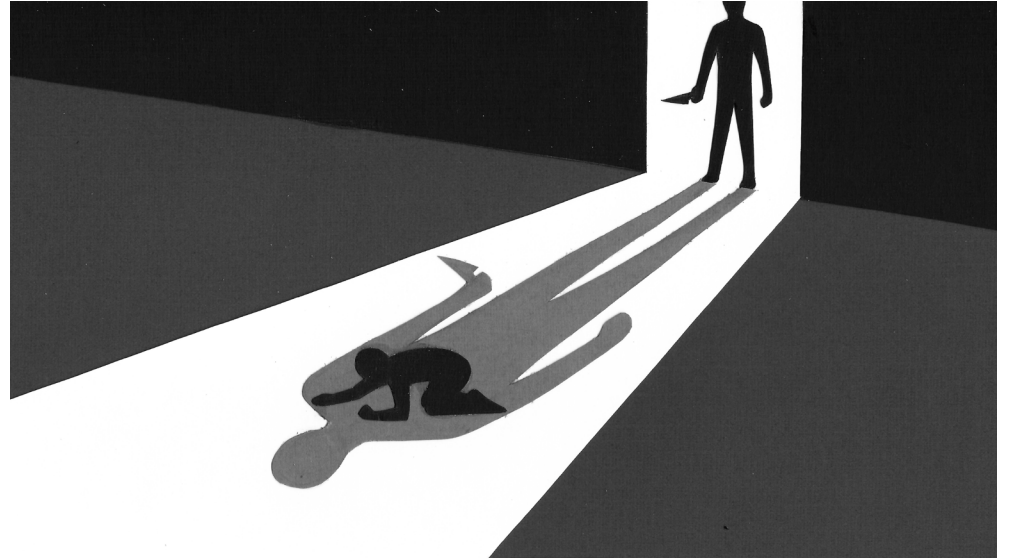
(biomass-powered Renaissance fan)





# VALUE STUDIES

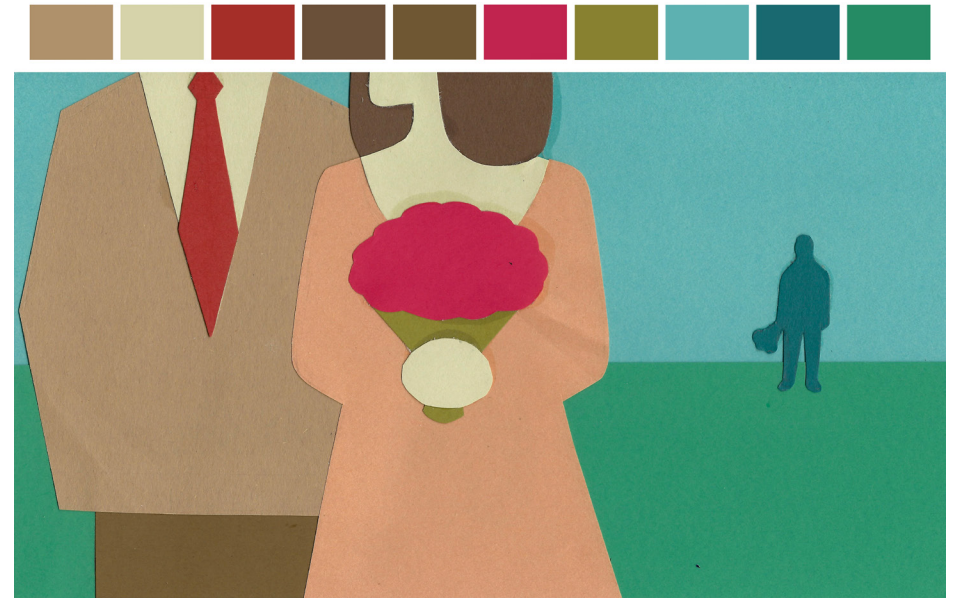
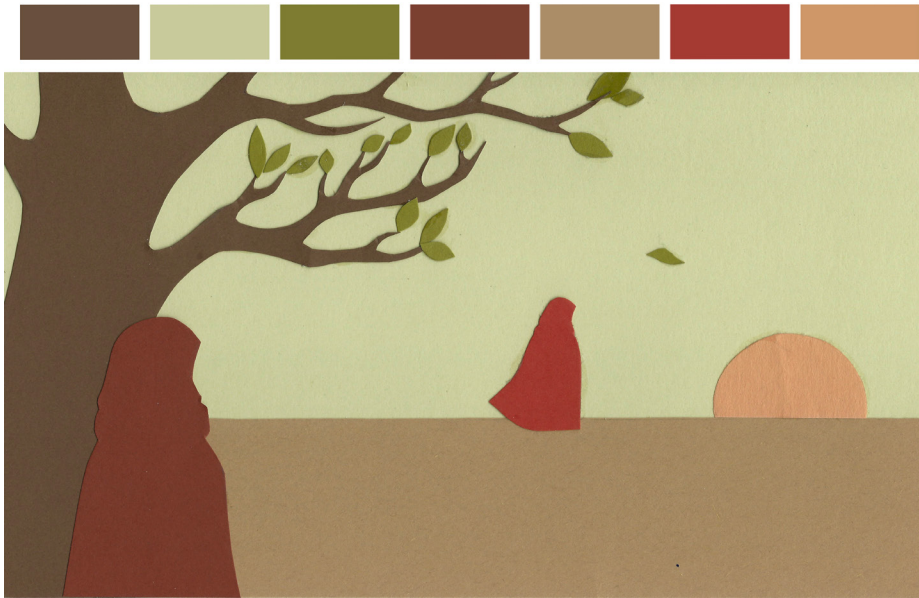
(coloured construction paper)





# COLOUR STUDIES + COLOUR GUIDES

(coloured construction paper)





# GESTURE DRAWINGS

(1 minute each)



# GESTURE DRAWINGS

(5 minutes each)





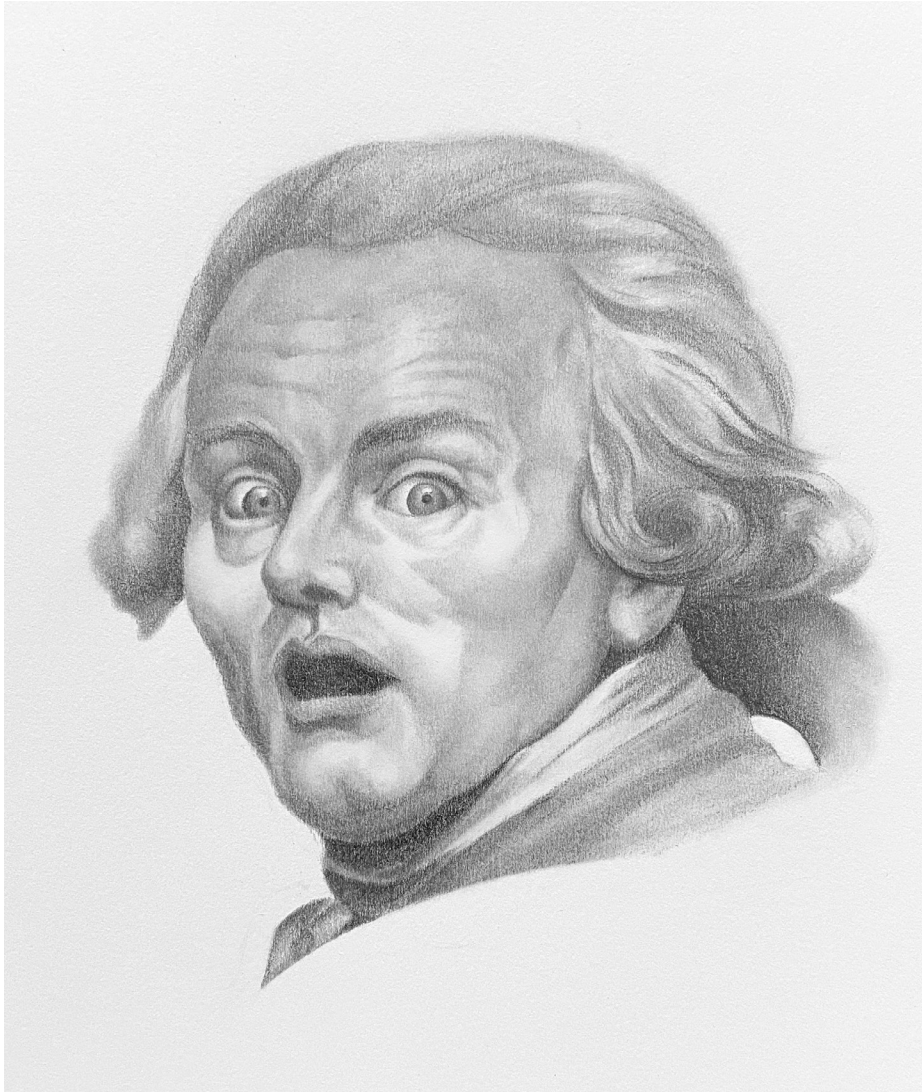
# PORTRAITS

(graphite on paper)

Study of a painting

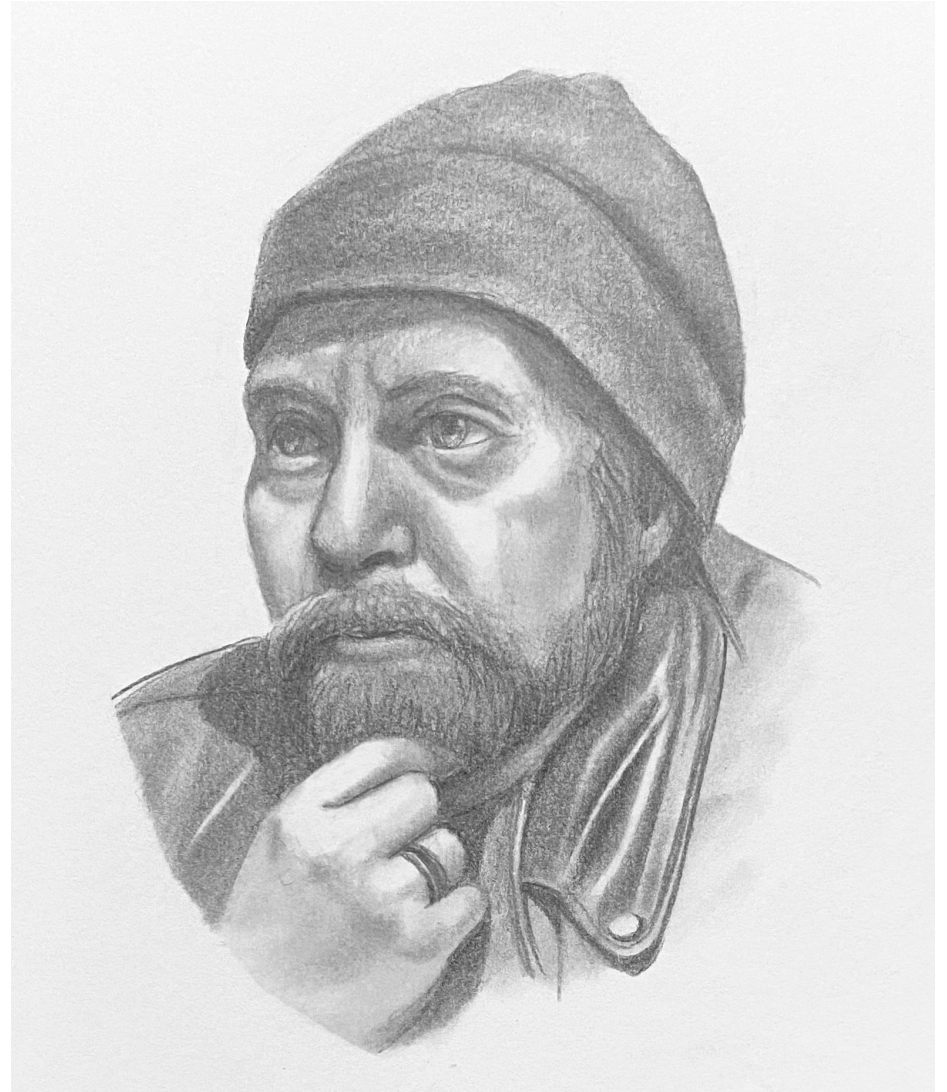
*Self-portrait in Surprise and Terror*

by Joseph Ducreux



Study of a live model

50 minutes



Thank you!

